

**DATE:** 23 February 2022  
**DESIGNER:** Thomas McCormack / Ross Traynor  
**PROJECT No:** 21053  
**PROJECT NAME:** Fassaroe Residential & Open Areas



Designed in accordance with EN 13201 / BS5489-1:2013 Class P4  
& in accordance with Wicklow County Council  
Guidelines For Public Lighting Works (April 2017)

## **Public Lighting Report**

## Layout Report

### General Data

Dimensions in Metres Angles in Degrees

### Calculation Grids

ID	Grid Name	X	Y	X' Length	Y' Length	X' Spacing	Y' Spacing
1	Grid 1	723398.42	718044.87	309.59	219.80	1.50	1.50
2	Grid 2	723322.79	718250.20	261.44	239.13	1.49	1.49
3	Grid 3	723708.86	718206.11	272.52	203.81	1.50	1.50
4	Grid 4	723938.56	718062.02	118.98	141.36	1.49	1.49
5	Grid 5	724065.39	717928.28	174.67	160.84	1.49	1.49
6	Grid 6	723706.13	718148.12	43.68	50.71	1.46	1.49
7	Grid 7	723577.54	718264.33	221.21	213.72	1.49	1.49
8	Grid 8	723776.32	718403.81	200.64	80.41	1.50	1.49

### Luminaires

#### Luminaire A Data



Supplier	C U Phosco
Type	P863-32-A1-NW-F0750-73W
Lamp(s)	740P NW
Lamp Flux (klm)	9.33
File Name	P863-32-A1-NW-F0750-73W.ies
Maintenance Factor	0.80
Imax70,80,90(cd/klm)	44.8, 6.7, 0.0
No. in Project	1

#### Luminaire B Data



Supplier	C U Phosco
Type	P852-12-P4-WW-CA0650-25W
Lamp(s)	730C WW
Lamp Flux (klm)	2.95
File Name	P852-12-P4-WW-CA0650-25W.ies
Maintenance Factor	0.80
Imax70,80,90(cd/klm)	730.4, 161.4, 0.8
No. in Project	77

#### Luminaire D Data



Supplier	C U Phosco
Type	P852-12-R3B-WW-CA0200-9W
Lamp(s)	730C WW
Lamp Flux (klm)	1.04
File Name	P852-12-R3B-WW-CA0200-9W.ies
Maintenance Factor	0.80
Imax70,80,90(cd/klm)	876.7, 56.5, 1.7
No. in Project	169

#### Luminaire F Data



Supplier	C U Phosco
Type	P863-16-C1-WW-E1000-52W
Lamp(s)	730P WW
Lamp Flux (klm)	5.59
File Name	P863-16-C1-WW-E1000-52W.ies
Maintenance Factor	0.80
Imax70,80,90(cd/klm)	444.4, 41.4, 0.0
No. in Project	20

### Layout

ID	Type	X	Y	Height	Angle	Tilt	Cant	Out-reach	Target X	Target Y	Target Z
26	B	723532.35	718121.97	6.00	344.00	5.00	0.00	0.40			
27	B	723535.18	718147.90	6.00	76.00	5.00	0.00	0.40			
28	B	723506.38	718167.65	6.00	358.00	5.00	0.00	0.40			

**Layout Continued**

ID	Type	X	Y	Height	Angle	Tilt	Cant	Out-reach	Target X	Target Y	Target Z
31	B	723523.69	718211.61	6.00	183.00	5.00	0.00	0.40			
32	B	723503.94	718204.62	6.00	359.00	5.00	0.00	0.40			
33	B	723503.94	718233.66	6.00	357.00	5.00	0.00	0.40			
34	B	723523.60	718240.32	6.00	178.00	5.00	0.00	0.40			
8	D	723425.70	718167.86	5.00	348.00	0.00	0.00	0.40			
36	D	723471.80	718193.00	6.00	258.00	5.00	0.00	0.40			
37	B	723439.98	718203.81	6.00	344.00	5.00	0.00	0.40			
38	B	723444.09	718223.24	6.00	348.00	5.00	0.00	0.40			
12	D	723420.99	718142.17	5.00	346.00	0.00	0.00	0.40			
41	B	723406.62	718276.55	6.00	347.00	5.00	0.00	0.40			
44	B	723387.18	718315.22	6.00	270.00	7.00	0.00	0.40			
45	B	723411.87	718304.82	6.00	268.00	5.00	0.00	0.40			
46	D	723444.56	718266.80	6.00	187.00	5.00	0.00	0.40			
47	D	723441.47	718286.30	6.00	181.00	5.00	0.00	0.40			
48	D	723438.78	718309.37	6.00	175.00	5.00	0.00	0.40			
49	D	723438.78	718336.95	6.00	179.00	5.00	0.00	0.40			
50	D	723439.10	718358.12	6.00	178.00	5.00	0.00	0.40			
51	B	723482.92	718371.78	6.00	90.00	5.00	0.00	0.40			
52	B	723441.47	718371.79	6.00	88.00	5.00	0.00	0.40			
53	B	723402.40	718380.50	6.00	60.00	5.00	0.00	0.40			
54	B	723373.62	718381.11	6.00	88.00	5.00	0.00	0.40			
25	B	723348.36	718390.77	6.00	270.00	0.00	0.00	0.40			
79	B	723501.89	718385.02	6.00	239.00	5.00	0.00	0.40			
80	B	723520.62	718337.63	6.00	184.00	5.00	0.00	0.40			
81	B	723505.98	718357.67	6.00	20.00	5.00	0.00	0.40			
84	B	723506.42	718318.85	6.00	0.00	5.00	0.00	0.40			
85	B	723522.84	718287.81	6.00	175.00	5.00	0.00	0.40			
86	B	723504.85	718280.92	6.00	0.00	5.00	0.00	0.40			
88	B	723743.30	718222.03	6.00	150.00	5.00	0.00	0.40			
89	B	723760.56	718243.14	6.00	127.00	5.00	0.00	0.40			
90	B	723784.89	718257.94	6.00	48.00	5.00	0.00	0.40			
91	B	723809.98	718259.20	6.00	234.00	5.00	0.00	0.40			
92	B	723822.40	718233.42	6.00	63.00	5.00	0.00	0.40			
93	B	723856.87	718222.14	6.00	236.00	5.00	0.00	0.40			
94	B	723905.52	718179.25	6.00	59.00	5.00	0.00	0.40			
95	B	723875.31	718198.95	6.00	64.00	8.00	0.00	0.40			

**Layout Continued**

ID	Type	X	Y	Height	Angle	Tilt	Cant	Out-reach	Target X	Target Y	Target Z
96	D	723863.03	718189.12	6.00	148.00	5.00	0.00	0.40			
97	B	723898.16	718204.62	6.00	327.00	5.00	0.00	0.40			
98	D	723855.51	718170.30	6.00	150.00	5.00	0.00	0.40			
99	D	723841.53	718149.14	6.00	143.00	5.00	0.00	0.40			
100	B	723915.15	718239.84	6.00	330.00	5.00	0.00	0.40			
101	B	723954.35	718250.26	6.00	55.00	5.00	0.00	0.40			
102	B	723931.15	718268.55	6.00	330.00	5.00	0.00	0.40			
103	B	723927.26	718295.63	6.00	59.00	5.00	0.00	0.40			
104	D	723872.24	718335.37	5.00	48.00	0.00	0.00	0.40			
105	B	723862.95	718294.43	6.00	144.00	5.00	0.00	0.40			
106	D	723874.02	718311.01	6.00	151.00	5.00	0.00	0.40			
107	B	723836.72	718277.32	6.00	328.00	5.00	0.00	0.40			
108	B	723839.57	718258.04	6.00	141.00	5.00	0.00	0.40			
109	B	723832.10	718310.69	6.00	56.00	5.00	0.00	0.40			
110	B	723979.50	718228.67	6.00	40.00	5.00	0.00	0.40			
111	B	723999.43	718201.86	6.00	26.00	5.00	0.00	0.40			
112	B	724016.49	718161.07	6.00	23.00	5.00	0.00	0.40			
113	B	723937.24	718158.46	6.00	63.00	5.00	0.00	0.40			
114	B	723967.73	718138.81	6.00	58.00	5.00	0.00	0.40			
115	B	723971.26	718117.66	6.00	150.00	5.00	0.00	0.40			
116	B	723950.70	718086.28	6.00	150.00	5.00	0.00	0.40			
117	B	723998.86	718146.81	6.00	292.00	5.00	0.00	0.40			
118	B	724008.64	718123.35	6.00	58.00	5.00	0.00	0.40			
63	D	724049.00	718071.20	5.00	56.00	0.00	0.00	0.40			
120	D	724057.04	718060.29	6.00	7.00	5.00	0.00	0.40			
128	B	723451.36	718183.41	6.00	78.00	5.00	0.00	0.40			
66	B	723459.32	718386.65	6.00	272.00	0.00	0.00	0.40			
131	D	723771.51	718239.68	6.00	148.00	5.00	0.00	0.40			
132	D	723859.65	718317.77	5.00	108.00	5.00	0.00	0.40			
133	D	724039.96	718097.66	6.00	54.00	5.00	0.00	0.40			
134	D	724043.73	718087.98	5.00	330.00	0.00	0.00	0.40			
135	B	724044.89	718038.73	6.00	329.00	5.00	0.00	0.40			
136	B	724032.49	718122.52	6.00	236.00	5.00	0.00	0.40			
138	B	724080.54	717931.68	6.00	260.00	5.00	0.00	0.40			
139	B	724091.15	717945.10	6.00	330.00	5.00	0.00	0.40			
140	B	724135.08	717975.12	6.00	263.00	5.00	0.00	0.40			



**Layout Continued**

ID	Type	X	Y	Height	Angle	Tilt	Cant	Out-reach	Target X	Target Y	Target Z
141	D	724084.67	717966.36	6.00	259.00	5.00	0.00	0.40			
142	B	724115.93	717957.11	6.00	120.00	5.00	0.00	0.40			
143	B	724164.26	717968.41	6.00	255.00	5.00	0.00	0.40			
144	B	724192.84	717962.98	6.00	245.00	5.00	0.00	0.40			
145	B	724229.45	717935.95	6.00	203.00	5.00	0.00	0.40			
146	D	724233.10	717955.62	6.00	311.00	5.00	0.00	0.40			
82	D	724236.38	717946.02	5.00	90.00	0.00	0.00	0.40			
148	B	724135.37	717994.75	6.00	346.00	5.00	0.00	0.40			
149	B	724158.29	718006.56	6.00	172.00	5.00	0.00	0.40			
150	B	724141.77	718030.74	6.00	352.00	5.00	0.00	0.40			
151	B	724155.22	718057.81	6.00	198.00	5.00	0.00	0.40			
152	F	723764.64	718164.73	6.00	149.00	5.00	0.00	0.40			
153	F	723744.65	718134.10	6.00	144.00	5.00	0.00	0.40			
154	F	723730.45	718182.47	6.00	326.00	5.00	0.00	0.40			
155	F	723715.30	718156.32	6.00	330.00	5.00	0.00	0.40			
156	F	723736.29	718154.01	6.00	65.00	5.00	0.00	0.40			
97	B	723506.40	718183.95	5.00	91.00	0.00	0.00	0.40			
95	B	723387.40	718260.52	6.00	261.00	5.00	0.00	0.40			
96	B	723414.98	718256.05	6.00	260.00	5.00	0.00	0.40			
97	D	723373.19	718301.72	5.00	79.00	0.00	0.00	0.40			
98	B	723839.27	718330.00	6.00	237.00	5.00	0.00	0.40			
99	D	723905.02	718313.24	5.00	85.00	0.00	0.00	0.40			
100	D	723866.52	718226.51	5.00	233.00	0.00	0.00	0.40			
101	D	723887.73	718212.95	5.00	235.00	0.00	0.00	0.40			
101	D	724122.41	717981.27	5.00	83.00	0.00	0.00	0.40			
102	B	724197.67	717944.25	5.00	73.00	0.00	0.00	0.40			
102	D	723509.98	718390.25	5.00	319.00	0.00	0.00	0.40			
103	D	723525.53	718351.54	5.00	276.00	0.00	0.00	0.40			
104	D	723536.95	718321.48	5.00	264.00	0.00	0.00	0.40			
105	D	723563.12	718316.53	5.00	253.00	0.00	0.00	0.40			
106	D	723574.94	718300.43	5.00	166.00	0.00	0.00	0.40			
107	D	723574.94	718283.21	5.00	198.00	0.00	0.00	0.40			
108	D	723586.46	718324.26	5.00	313.00	0.00	0.00	0.40			
109	D	723583.61	718267.35	5.00	214.00	0.00	0.00	0.40			
110	D	723603.13	718342.14	5.00	161.00	0.00	0.00	0.40			
111	D	723603.52	718367.95	5.00	199.00	0.00	0.00	0.40			

**Layout Continued**

ID	Type	X	Y	Height	Angle	Tilt	Cant	Out-reach	Target X	Target Y	Target Z
112	D	723593.32	718386.56	5.00	209.00	0.00	0.00	0.40			
113	D	723592.59	718401.62	5.00	160.00	0.00	0.00	0.40			
114	D	723591.64	718417.11	5.00	286.00	0.00	0.00	0.40			
115	D	723609.80	718427.68	5.00	308.00	0.00	0.00	0.40			
116	D	723621.85	718444.70	5.00	341.00	0.00	0.00	0.40			
117	D	723630.71	718422.62	5.00	257.00	0.00	0.00	0.40			
118	D	723646.51	718423.11	5.00	331.00	0.00	0.00	0.40			
119	D	723637.49	718395.27	5.00	347.00	0.00	0.00	0.40			
120	D	723643.01	718375.90	5.00	196.00	0.00	0.00	0.40			
121	D	723636.83	718354.54	5.00	0.00	0.00	0.00	0.40			
122	D	723621.13	718371.59	5.00	276.00	0.00	0.00	0.40			
123	D	723643.31	718331.34	5.00	9.00	0.00	0.00	0.40			
124	D	723652.07	718313.08	5.00	31.00	0.00	0.00	0.40			
125	D	723672.26	718290.23	5.00	53.00	0.00	0.00	0.40			
126	D	723669.95	718311.70	5.00	351.00	0.00	0.00	0.40			
127	D	723691.21	718276.41	5.00	60.00	0.00	0.00	0.40			
128	D	723709.66	718265.99	5.00	46.00	0.00	0.00	0.40			
129	D	723677.70	718330.60	5.00	328.00	0.00	0.00	0.40			
130	D	723695.18	718340.43	5.00	277.00	0.00	0.00	0.40			
131	D	723717.10	718345.96	5.00	297.00	0.00	0.00	0.40			
132	D	723733.33	718357.30	5.00	318.00	0.00	0.00	0.40			
133	D	723748.71	718373.79	5.00	159.00	0.00	0.00	0.40			
134	D	723747.98	718401.48	5.00	8.00	0.00	0.00	0.40			
135	D	723740.68	718423.65	5.00	31.00	0.00	0.00	0.40			
136	D	723725.23	718440.38	5.00	56.00	0.00	0.00	0.40			
137	D	723702.74	718449.31	5.00	72.00	0.00	0.00	0.40			
138	D	723680.95	718448.79	5.00	104.00	0.00	0.00	0.40			
139	D	723678.12	718463.06	5.00	287.00	0.00	0.00	0.40			
140	D	723664.27	718442.49	5.00	134.00	0.00	0.00	0.40			
141	D	723657.97	718457.73	5.00	293.00	0.00	0.00	0.40			
142	D	723696.47	718462.87	5.00	112.00	0.00	0.00	0.40			
143	D	723642.65	718453.57	5.00	279.00	0.00	0.00	0.40			
144	D	723609.10	718451.85	5.00	273.00	0.00	0.00	0.40			
145	D	723585.15	718452.48	5.00	267.00	0.00	0.00	0.40			
146	D	723712.39	718471.13	5.00	282.00	0.00	0.00	0.40			
147	D	723738.22	718473.22	5.00	268.00	0.00	0.00	0.40			

**Layout Continued**

ID	Type	X	Y	Height	Angle	Tilt	Cant	Out-reach	Target X	Target Y	Target Z
148	D	723763.23	718469.80	5.00	259.00	0.00	0.00	0.40			
149	D	723789.28	718460.94	5.00	240.00	0.00	0.00	0.40			
150	D	723810.71	718441.38	5.00	45.00	0.00	0.00	0.40			
151	D	723737.50	718340.98	5.00	17.00	0.00	0.00	0.40			
152	D	723756.09	718317.08	5.00	198.00	0.00	0.00	0.40			
153	D	723759.90	718292.64	5.00	178.00	0.00	0.00	0.40			
154	D	723653.05	718358.33	5.00	221.00	0.00	0.00	0.40			
155	D	723674.70	718344.17	5.00	242.00	0.00	0.00	0.40			
156	D	723642.23	718312.31	5.00	151.00	0.00	0.00	0.40			
157	D	723623.68	718298.98	5.00	106.00	0.00	0.00	0.40			
158	D	723648.39	718302.78	5.00	254.00	0.00	0.00	0.40			
159	D	723659.68	718285.02	5.00	210.00	0.00	0.00	0.40			
160	D	723674.18	718278.37	5.00	265.00	0.00	0.00	0.40			
161	B	723592.23	718308.02	6.00	34.00	0.00	0.00	0.40			
162	B	723611.29	718314.47	6.00	208.00	0.00	0.00	0.40			
163	B	723602.84	718268.85	6.00	0.00	0.00	0.00	0.40			
164	B	723621.71	718281.31	6.00	185.00	0.00	0.00	0.40			
165	D	723880.99	718320.71	5.00	77.00	0.00	0.00	0.40			
166	D	723856.54	718351.34	5.00	246.00	0.00	0.00	0.40			
167	D	723835.59	718359.53	5.00	246.00	0.00	0.00	0.40			
168	D	723821.69	718373.91	5.00	219.00	0.00	0.00	0.40			
169	D	723755.94	718430.83	5.00	306.00	0.00	0.00	0.40			
170	D	723779.01	718428.80	5.00	246.00	0.00	0.00	0.40			
171	D	723792.89	718411.30	5.00	211.00	0.00	0.00	0.40			
172	D	723803.24	718391.34	5.00	42.00	0.00	0.00	0.40			
173	D	723758.87	718413.82	5.00	3.00	0.00	0.00	0.40			
174	D	723761.18	718392.38	5.00	8.00	0.00	0.00	0.40			
175	D	723770.61	718364.93	5.00	36.00	0.00	0.00	0.40			
176	D	723787.33	718341.73	5.00	50.00	0.00	0.00	0.40			
177	D	723866.82	718361.33	5.00	347.00	0.00	0.00	0.40			
178	D	723864.26	718386.35	5.00	22.00	0.00	0.00	0.40			
179	D	723851.30	718403.64	5.00	225.00	0.00	0.00	0.40			
180	D	723832.01	718424.58	5.00	221.00	0.00	0.00	0.40			
181	D	723885.17	718378.19	5.00	69.00	0.00	0.00	0.40			
182	D	723911.28	718372.31	5.00	84.00	0.00	0.00	0.40			
183	D	723928.34	718365.53	5.00	229.00	0.00	0.00	0.40			

**Layout Continued**

ID	Type	X	Y	Height	Angle	Tilt	Cant	Out-reach	Target X	Target Y	Target Z
184	D	723937.79	718344.97	5.00	176.00	0.00	0.00	0.40			
185	D	723927.13	718320.62	5.00	132.00	0.00	0.00	0.40			
186	D	723943.32	718320.19	5.00	40.00	0.00	0.00	0.40			
187	D	723589.14	718284.45	5.00	305.00	0.00	0.00	0.40			
188	D	723721.55	718241.05	5.00	76.00	0.00	0.00	0.40			
189	D	723723.37	718227.04	5.00	159.00	0.00	0.00	0.40			
190	D	723477.68	718400.43	5.00	308.00	0.00	0.00	0.40			
191	D	723493.44	718416.58	5.00	320.00	0.00	0.00	0.40			
192	D	723508.08	718430.42	5.00	300.00	0.00	0.00	0.40			
193	D	723536.15	718431.33	5.00	253.00	0.00	0.00	0.40			
194	D	723549.58	718412.04	5.00	26.00	0.00	0.00	0.40			
195	D	723571.69	718399.62	5.00	249.00	0.00	0.00	0.40			
196	D	723431.54	718389.05	5.00	21.00	0.00	0.00	0.40			
197	D	723429.32	718408.98	5.00	0.00	0.00	0.00	0.40			
198	D	723437.31	718431.07	5.00	326.00	0.00	0.00	0.40			
199	D	723456.74	718447.83	5.00	299.00	0.00	0.00	0.40			
200	D	723480.74	718454.81	5.00	281.00	0.00	0.00	0.40			
201	D	723504.04	718458.18	5.00	275.00	0.00	0.00	0.40			
202	D	723519.46	718463.07	5.00	251.00	0.00	0.00	0.40			
203	D	723542.91	718457.35	5.00	260.00	0.00	0.00	0.40			
204	D	723563.52	718453.86	5.00	264.00	0.00	0.00	0.40			
205	D	723492.22	718472.35	5.00	250.00	0.00	0.00	0.40			
206	D	723461.54	718478.63	5.00	272.00	0.00	0.00	0.40			
207	D	723436.34	718481.12	5.00	272.00	0.00	0.00	0.40			
208	D	723431.01	718470.22	5.00	298.00	0.00	0.00	0.40			
209	D	723408.25	718450.17	5.00	331.00	0.00	0.00	0.40			
210	D	723400.73	718421.29	5.00	4.00	0.00	0.00	0.40			
211	D	723412.44	718394.45	5.00	36.00	0.00	0.00	0.40			
212	D	723466.62	718436.38	5.00	150.00	0.00	0.00	0.40			
213	D	723452.80	718416.86	5.00	341.00	0.00	0.00	0.40			
214	D	723445.75	718396.47	5.00	158.00	0.00	0.00	0.40			
215	D	723533.46	718442.77	5.00	198.00	0.00	0.00	0.40			
216	D	723411.42	718479.24	5.00	279.00	0.00	0.00	0.40			
217	D	723389.80	718474.47	5.00	289.00	0.00	0.00	0.40			
218	D	723366.75	718464.07	5.00	303.00	0.00	0.00	0.40			
219	D	723345.22	718449.65	5.00	313.00	0.00	0.00	0.40			

**Layout Continued**

ID	Type	X	Y	Height	Angle	Tilt	Cant	Out-reach	Target X	Target Y	Target Z
220	D	723356.08	718442.53	5.00	280.00	0.00	0.00	0.40			
221	D	723388.48	718440.01	5.00	254.00	0.00	0.00	0.40			
222	D	723563.73	718234.77	5.00	0.00	0.00	0.00	0.40			
223	D	723569.76	718212.06	5.00	195.00	0.00	0.00	0.40			
224	D	723581.92	718182.97	5.00	48.00	0.00	0.00	0.40			
225	D	723570.72	718187.66	5.00	140.00	0.00	0.00	0.40			
226	D	723603.77	718168.22	5.00	67.00	0.00	0.00	0.40			
227	D	723584.87	718162.32	5.00	297.00	0.00	0.00	0.40			
228	D	723565.35	718144.62	5.00	322.00	0.00	0.00	0.40			
229	D	723622.28	718163.31	5.00	90.00	0.00	0.00	0.40			
230	D	723557.11	718124.20	5.00	0.00	0.00	0.00	0.40			
231	D	723556.57	718113.92	5.00	0.00	0.00	0.00	0.40			
232	D	723554.21	718171.72	5.00	338.00	0.00	0.00	0.40			
233	D	723555.27	718148.85	5.00	27.00	0.00	0.00	0.40			
234	D	723646.43	718158.63	5.00	236.00	0.00	0.00	0.40			
235	D	723665.79	718140.40	5.00	214.00	0.00	0.00	0.40			
236	D	723676.20	718118.07	5.00	191.00	0.00	0.00	0.40			
237	D	723671.88	718095.68	5.00	343.00	0.00	0.00	0.40			
238	D	723664.57	718074.98	5.00	337.00	0.00	0.00	0.40			
239	D	723671.76	718151.91	5.00	337.00	0.00	0.00	0.40			
240	D	723688.98	718172.90	5.00	150.00	0.00	0.00	0.40			
241	D	723686.58	718192.41	5.00	215.00	0.00	0.00	0.40			
242	D	723655.69	718167.86	5.00	112.00	0.00	0.00	0.40			
243	D	723677.66	718182.59	5.00	137.00	0.00	0.00	0.40			
244	D	723696.77	718201.50	5.00	113.00	0.00	0.00	0.40			
245	D	723752.06	718267.25	5.00	146.00	0.00	0.00	0.40			
246	D	723695.73	718257.61	5.00	33.00	0.00	0.00	0.40			
247	D	723733.79	718257.09	5.00	266.00	0.00	0.00	0.40			
248	F	723540.11	718070.30	6.00	74.00	5.00	0.00	0.40			
249	F	723549.41	718087.27	6.00	254.00	5.00	0.00	0.40			
250	B	723575.33	718046.75	6.00	74.00	5.00	0.00	0.40			
251	F	723568.66	718082.51	6.00	258.00	5.00	0.00	0.40			
252	F	723611.19	718071.27	6.00	255.00	5.00	0.00	0.40			
253	B	723614.64	718042.51	6.00	161.00	5.00	0.00	0.40			
254	F	723556.68	718065.63	6.00	72.00	5.00	0.00	0.40			
255	B	723592.64	718042.05	6.00	72.00	5.00	0.00	0.40			

**Layout Continued**

ID	Type	X	Y	Height	Angle	Tilt	Cant	Out-reach	Target X	Target Y	Target Z
256	F	723591.51	718076.31	6.00	257.00	5.00	0.00	0.40			
257	F	723582.75	718078.86	6.00	168.00	5.00	0.00	0.40			
258	F	723589.50	718060.96	6.00	81.00	5.00	0.00	0.40			
259	F	723572.91	718066.06	6.00	345.00	5.00	0.00	0.40			
260	F	723614.22	718056.44	6.00	77.00	5.00	0.00	0.40			
261	B	723601.48	718057.66	6.00	250.00	5.00	0.00	0.40			
262	F	723731.06	718145.79	6.00	153.00	5.00	0.00	0.40			
263	F	723747.57	718171.26	6.00	144.00	5.00	0.00	0.40			
264	A	723749.26	718180.54	6.00	55.00	5.00	0.00	0.40			
265	F	723734.32	718140.69	6.00	333.00	5.00	0.00	0.40			
266	F	723744.33	718164.00	6.00	233.00	5.00	0.00	0.40			
267	F	723725.15	718171.60	6.00	330.00	5.00	0.00	0.40			

# Horizontal Illuminance (lux)

Grid 1



## Results

Eav	5.71
Emin	1.12
Emax	28.44
Emin/Emax	0.04
Emin/Eav	0.20



# Horizontal Illuminance (lux)

Grid 2



## Results

Eav	22.56
Emin	5.06
E <sub>max</sub>	68.72
E <sub>min</sub> /E <sub>max</sub>	0.07
E <sub>min</sub> /E <sub>av</sub>	0.22



# Horizontal Illuminance (lux)

Grid 3

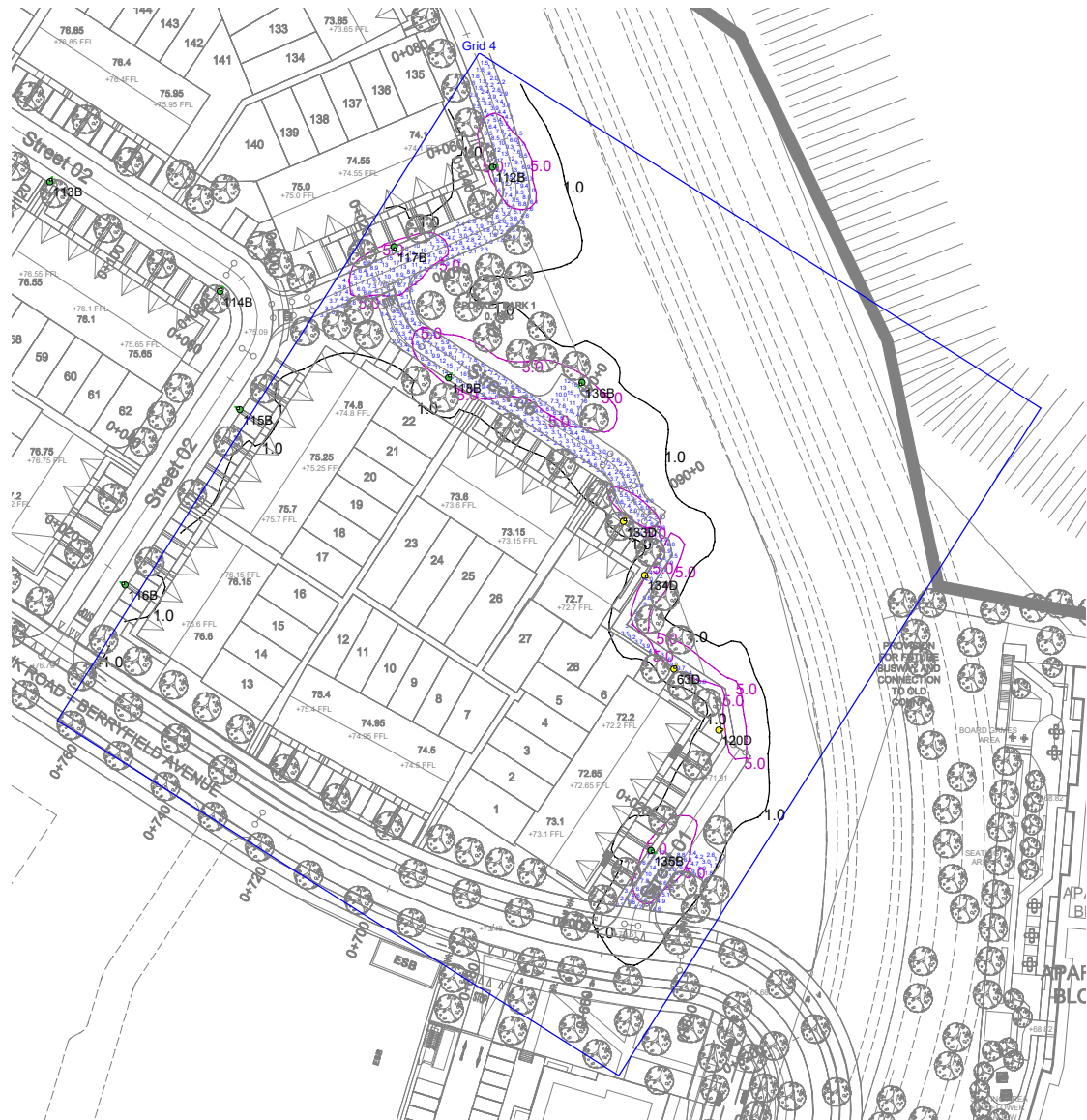


## Results

Eav	22.56
Emin	5.06
Emax	68.72
Emin/Emax	0.07
Emin/Eav	0.22

# Horizontal Illuminance (lux)

Grid 4

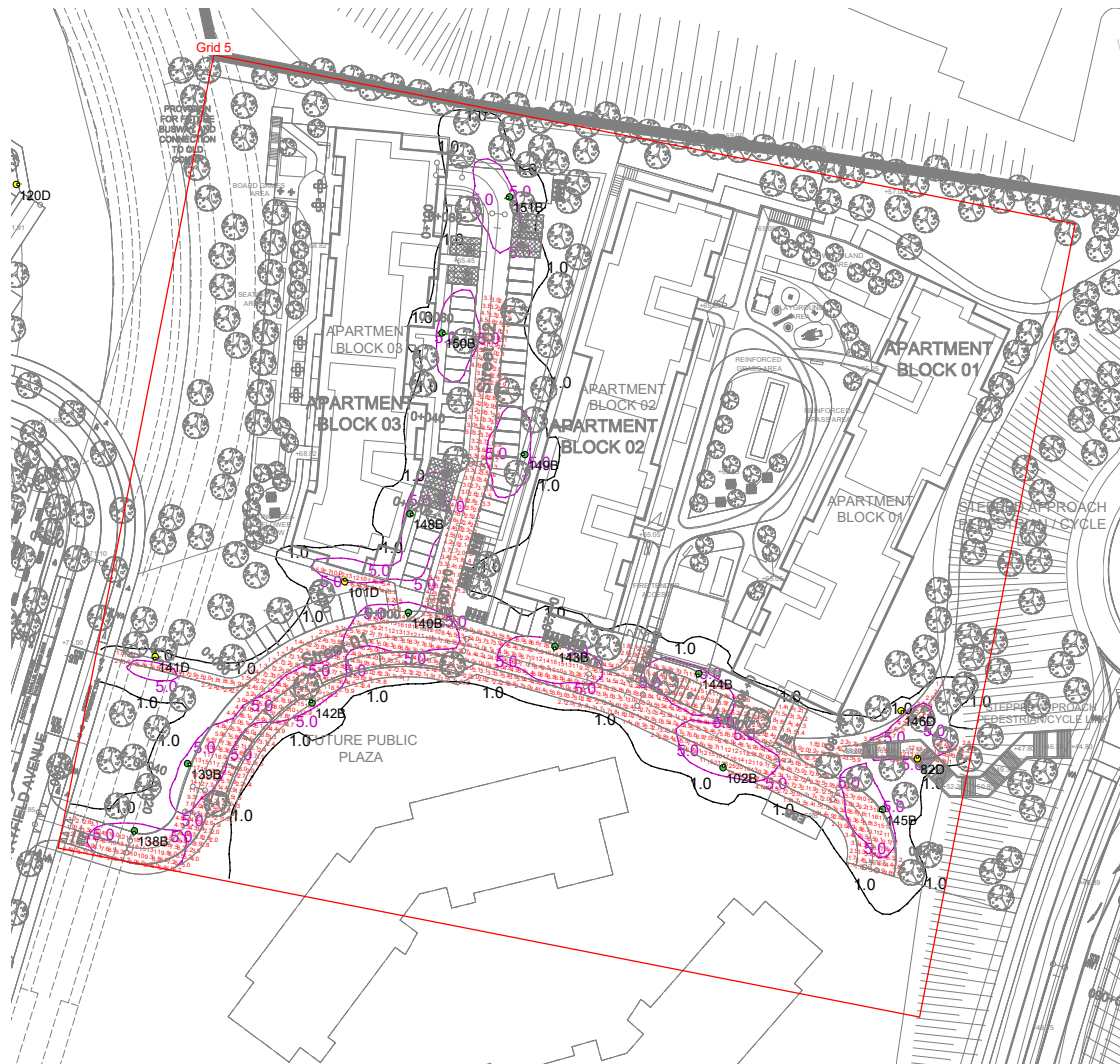


## Results

Eav	22.56
Emin	5.06
Emax	68.72
Emin/Emax	0.07
Emin/Eav	0.22

# Horizontal Illuminance (lux)

Grid 5



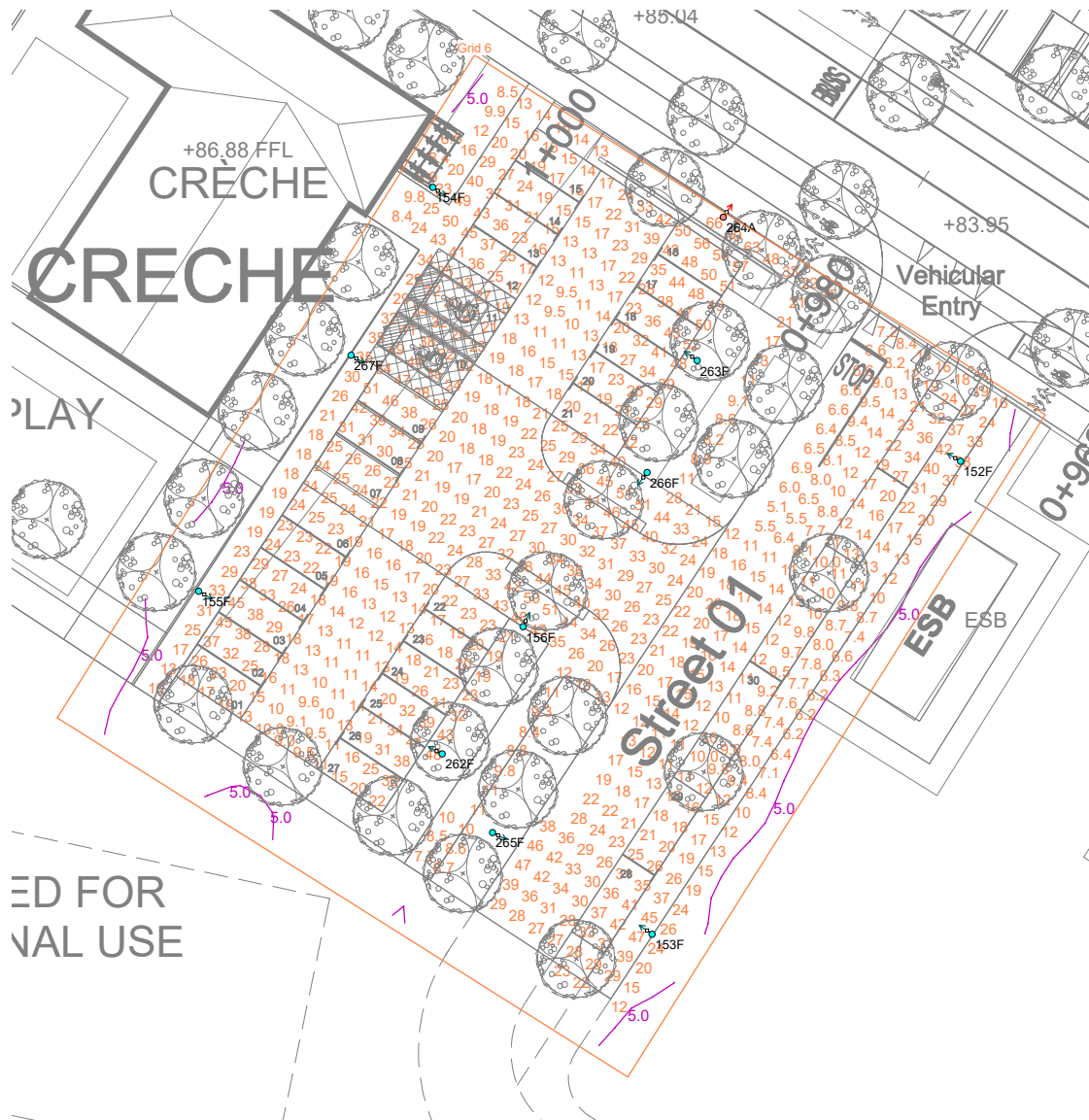
## Results

Eav	22.56
Emin	5.06
Emax	68.72
Emin/Emax	0.07
Emin/Eav	0.22



## Horizontal Illuminance (lux)

Grid 6

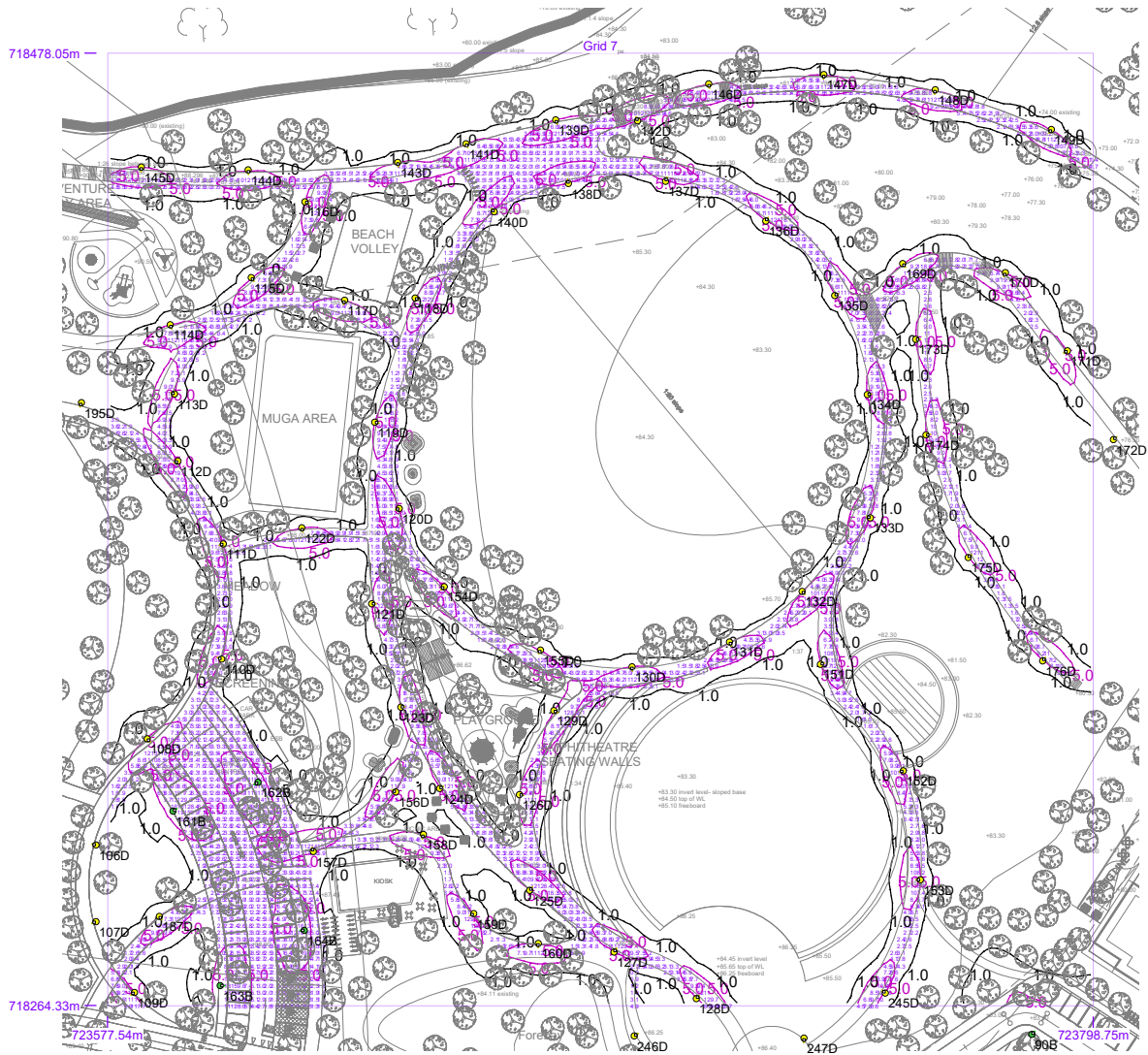


### Results

Eav	22.56
Emin	5.06
Emax	68.72
Emin/Emax	0.07
Emin/Eav	0.22

# Horizontal Illuminance (lux)

Grid 7



## Results

Eav	22.56
Emin	5.06
Emax	68.72
Emin/Emax	0.07
Emin/Eav	0.22

